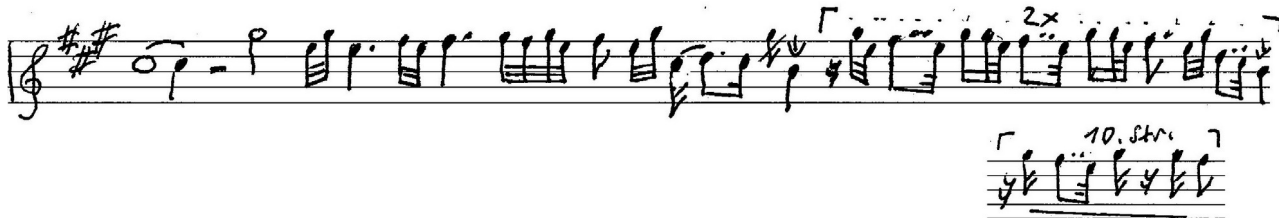


Hermit Thrush - 7 Strophentypen aus 13 Strophen

Strophe 1 (1/13) - Pentatonik: a-c-e-g



Strophe 2 (2/10) - cis-phrygisch: h-cis-d-e-fis-gis



Strophe 3 (3) - Pentatonik: fis-gis-h-cis-e



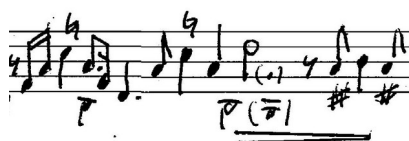
Strophe 4 (4/7) - B-7/9 - B-Dur-Sept-Non-Akkord: b-d-f-as-c (2-stimmig)



Strophe 5 (5/9/11) - H-Dur-Septakkord / verm. Septakkord / D-Dur



Schluß 11. Strophe



kurzer Schluß 9. Strophe



Strophe 6 (6/8) - Ganztonfolge: a-h-cis-dis-f-g



Strophe 7 (12) - A-7/9 - A-Dur-Sept-Non-Akkord: a-cis-e-g-h

